

Zen Design Pindot

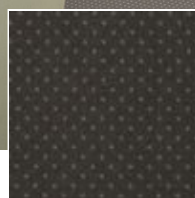
Polyamide carpet, known for its durability, can be used in any room. One of the most important advantages is the fact that the carpet fibers can stand up to a lot of wear and tear. This makes the use of nylon carpeting especially practical in areas where there is a lot of foot traffic since the synthetic fibers hold their shape longer than many other types of fibers. As a result, the pile of the polyamide carpeting looks new and fresh for many more years than other carpeting selections.

APPLICATIONS

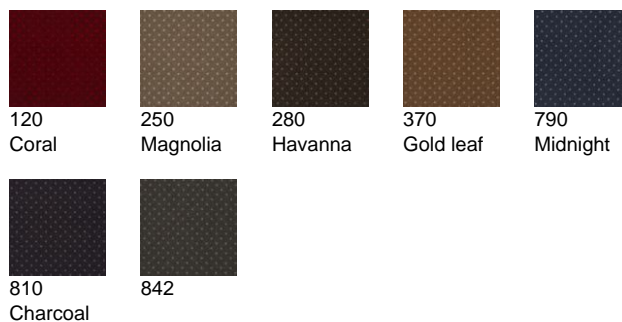
- Slaapkamer
- Woonkamer

TECHNICAL SPECIFICATIONS

Secondary backing:	SB
Quality code:	Z01
Manufacturing process:	Tufted
Manufacturing process (hospitality):	1/10" Saxony
Pile composition:	PA
Pile composition (hospitality):	PA
Fire behaviour:	Bfl-s1
EN 1307 Classification:	Cl. 33 Commercial Heavy
Primary backing:	Non Woven
Total height mm:	8.0
Effective pile height mm:	6.0
Width:	400
Number of knots/sqm:	200940
Pile weight/sqm:	1000
Total weight gr/sqm:	
ISO 140/8 Impact sound insulation dB:	28
ISO 354 Sound absorption 1000Hz:	0.30
ISO 1654 Sound absorption:	0.25
DIN 52612 Thermal retention m ² /kW:	0.11
TOG Rating:	0.99



842 / Zen Design Pindot /



ISO 6356 2000 Teil 2: Permanently antistatic kV <:	2
ISO 6356 2000 Teil 6: Surface resistance RoT ≤:	10 E9
ISO 10965 Teil 6: Vertical resistance Rdt ≤ :	10 E9
ISO 105 B02 Lightfastness ≥:	5-6
ISO 105 E01 Waterfastness change in colour ≥:	4
ISO 105 E01 Waterfastness staining ≥:	3-4
ISO 105 X12 Rubbingfastness dry ≥:	4
ISO 105 X12 Rubbingfastness wet ≥:	4